

<https://doi.org/10.37208/tgn28105>

***Cryptachaea blattea* (Arachnida: Araneae): a second confirmed record for Scotland and first for Glasgow**

C. McEwan

Flat 3/1, 20 St Andrew's Square, Glasgow G1 5PQ

E-mail: cmcewan74@btinternet.com

On 30th June 2022, I visited the Glasgow Necropolis to search for arachnids and other invertebrates. I was using the grubbing method to search an untended area of long grass and plants, right down to roots level. Whilst searching, a small, female spider appeared in my sampling tray, which I thought was an unusually patterned *Theridion* species. I shared photographs of the spider with my peers on social media. It was from the Theridiidae family, but the images were not sharp enough for an exact identification.

I returned to Glasgow Necropolis daily for the next two weeks and finally found another specimen, again female, on 12th July 2022. The spider was collected using a barrel pooter and transferred to a sample tray. High-resolution images were taken using macro-photography, and these were reviewed by Dr Geoff Oxford, Honorary Secretary of the British Arachnological Society, who confirmed the spider was *Cryptachaea blattea*. From the photographs it was possible to see the diagnostic tubercle (Fig. 1A) on the abdomen (Bee *et al.*, 2020), and the six white guanine spots (Fig. 1B) on the underside of the abdomen, which are characteristic of this species (Oxford, 2021).

C. blattea (Urquhart, 1886) is usually found in trees and bushes, but also favours plastic garden furniture and compost bins. A common Australasian species, it is thought to have arrived in Britain via house plants imported from Europe (Bee *et al.*, 2020). The species was first recorded in Britain in 2015 but has since been found in a rapidly growing number of locations in southern England and Wales, and scattered sites in the north of England and Scotland. Due to the small number of confirmed records, the spider is currently regarded as extremely rare in the U.K. (Bee *et al.*, 2020). There has been only one other confirmed record of this spider in Scotland (SRS, 2022) at a site in Tarbrax (South Lanarkshire, VC77) in 2019. There were no records for Scotland listed in the NBN Atlas. This find is the second for the vice-county, and confirms the presence of the species in Glasgow, suggesting it could be found at other sites within the city and wider area.

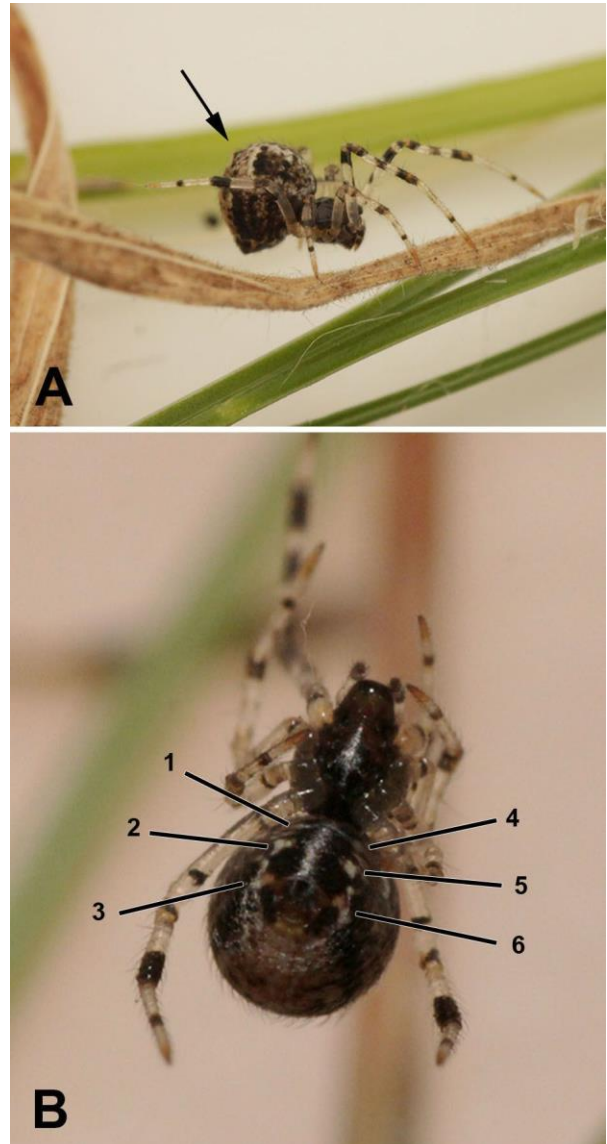


Fig. 1. *Cryptachaea blattea*, female, Glasgow, Scotland, 12th July 2022; length 4 mm. (A) Lateral view, showing diagnostic tubercle on the abdomen (arrow). (B) Ventral view, showing the pattern of six guanine spots (1-6). (Photo: C. McEwan)

My thanks to Dr Geoff Oxford of the British Arachnological Society and Robyn Haggard of the Glasgow Museums Biological Records Centre, Glasgow Life for their time and assistance in identifying the spider and recording the find in the relevant databases.

REFERENCES

- Bee, L., Oxford, G. & Smith, H. (2020). *Britain's Spiders. A Field Guide*. (2nd edition). WILDGuides, Old Basing.
<https://doi.org/10.1515/9780691211800>
British Arachnological Society Spider Recording Scheme (SRS) (2021). Summary for *Cryptachaea blattea* (Araneae).
<https://srs.britishspiders.org.uk/portal.php/p/Summary/s/Cryptachaea+blattea> Accessed 1st August 2022.

- National Biodiversity Network (NBN) Atlas (2022).
<https://species.nbnatlas.org/species/NHMSYS0020953647> Accessed 1st August 2022.
- Oxford, G. (2021). Identifying *Parasteatoda* and *Cryptachaea* species (Theridiidae) from ventral abdominal patterns. *The Newsletter of the British Arachnological Society* 152, 2-3.